

About PRIMA

PRIMA Environmental, Inc. is an independent laboratory specializing in treatability testing, technology evaluations, custom laboratory work and scientific consulting services for the environmental community.

PRIMA was established in 1998 to provide high quality scientific testing for clients whose projects cannot be conducted by an analytical laboratory.

A woman-owned, small business enterprise, PRIMA is certified by the United States Department of Agriculture to receive soil samples from Hawaii, Puerto Rico and foreign countries.



PRIMA is an independent laboratory specializing in treatability testing, innovative remediation technologies and custom lab work.

Our Clients

PRIMA works with a wide range of clients who have projects all over the world. Our clients include independent consultants as well as large environmental firms. Sites range from gas stations and dry cleaners to DoD and Superfund sites. Most sites are located in the continental United States, but PRIMA has also conducted tests on soil and water from sites in Hawaii and foreign countries.



PRIMA Environmental, Inc.
5070 Robert J Mathews Pkwy
Suite 300
El Dorado Hills, CA 95762
Phone: 916-939-7300
Fax: 916-939-7398
www.PrimaEnvironmental.com

Independent
Treatability Testing

Emerging
Remediation
Technologies

Unusual and
Non-Standard
Analyses

Custom Lab Work

Certified to
Receive Foreign
Soil

Established in
1998

Call us today:

916-939-7300

An Applied Sciences and Technology Laboratory

WHEN
KNOWING

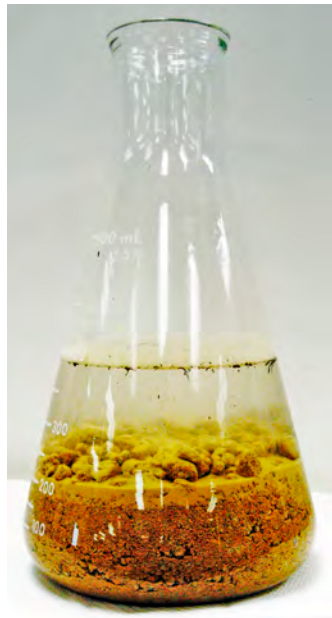
“mg/kg”

ISN'T
ENOUGH



PRIMA Environmental, Inc.

Providing site-specific information so you can make scientifically sound decisions.



PRIMA is an independent laboratory that specializes in bench-scale testing that analytical labs can't do.

Bench-scale testing can help you identify an appropriate remediation technology, spot potential problems before going into the field, and assure your client that your approach to the environmental concerns at his/her site is sound.

Laboratory Services

After discussing your goals, PRIMA will design and perform tests to address your specific needs, or we will follow procedures you supply. Examples of laboratory tests include:

- Comparison of chemical remediation options
- Evaluation of enhanced biodegradation
- Confirmation of mechanism of removal (e.g. destruction vs. volatilization)
- Identification of effective treatments
- Assessment of secondary effects of treatment
- Attenuation studies
- Measurement of Soil Oxidant Demand (SOD)
- *In vitro* bioaccessibility of lead or arsenic in soil
- Evaluation of natural formation of Cr(VI)

Remediation Technologies

PRIMA has extensive experience with a broad range of remediation technologies including:

Chemical oxidation

- Ozone
- Permanganate
- Activated Persulfate
- Fenton's Reagent/ Catalyzed Hydrogen Peroxide

Chemical reduction

- Zero-valent Iron (ZVI)
- Sulfur Modified Iron (SMI)
- Calcium Polysulfide

Metals stabilization

- Cement
- Lime
- Triple super phosphate

Enhanced biodegradation

- Air sparging
- Low-dose H₂O₂
- Carbon sources (emulsified oil, lactate, cheese whey)

Landfarming/biopiles

Contaminants Investigated

PRIMA works with a wide range of contaminants in both soil and water including common and uncommon contaminants:

- Petroleum hydrocarbons (gas, diesel, oil)
- MTBE, TBA and other fuel oxygenates
- Chlorinated solvents (PCE, TCE, DCA)
- 1,2,3-trichloropropane (1,2,3-TCP)
- 1,4-dioxane
- Pentachlorophenol (PCP)
- Freon
- PAHs
- Pesticides (DDT, Lindane, Dieldrin, toxaphene)
- Styrene
- Nitrate
- Metals (lead, copper, chromium)
- Arsenic
- Hexavalent chromium, Cr(VI)

Consulting Services

Understanding the science behind your options can help you choose the best methods of managing the environmental issues at your site and help stakeholders accept and support your decisions.

PRIMA's consulting services include:

- Review of previous treatability studies
- Scientific review of reports
- Development of test procedures
- Literature searches/reviews
- Presentation of data and scientific issues to clients, legal counsel, regulatory agencies, stakeholders, students and other interested parties.